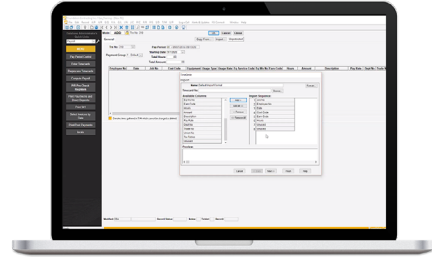


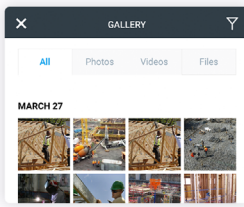
# Streamline payroll processing

## Time data integration

Save time and eliminate errors caused by manual entry by importing time card data from Raken directly into FOUNDATION.



## Collect better field data



**DESCRIPTION**

Ran in-wall conduit for all offices on level 3. Coordinated with mechanical contractor and framers to confirm pathways. Rough-in inspection scheduled for next week.

MATERIAL	QUANTITY
Bamboo Flooring 09-6433 Wood Flooring	500 sf
Carpet 09-6816 Carpeting	300 sf
Carpet Padding	300 sf

Cancel Edit Crew

2 17  
TOTAL WORKERS TOTAL HOURS **BULK EDIT**

**Betzi Sawchuk**  
Local 342 Journeyman  
Week Total: 8.5  
RT 8 OT 0.5 DT 0 **8.5 hrs**

8:00 AM - 4:30 PM  Lunch  Break  
RT OT DT

## Jobsite progress

Field crews can share updates straight from the jobsite using photos, videos, and notes compiled into PDF daily reports.

## Field productivity

Keep track of productivity by logging labor hours (including overtime), materials installed, and heavy equipment on-site.

1. Does the work about to be completed have a high risk or high hazards involved?

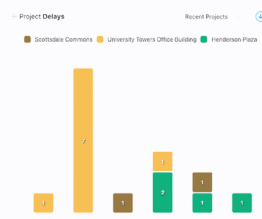
Yes  No  N/A

2. What are the risks associated with this work?

We are working on the 12th floor of building A.



X  
I, Jimmy Hess, have reviewed and completed this report.



Activity Insights

**Compliance**  
by Project

Name	Completed Dailies	Missed Dailies	Compliance
The Village of Da	19	2	90%
Fort Worth Conv	15	4	79%

## Safety and quality

Maintain safety compliance with custom checklists, a library of toolbox talks, digital sign-in sheets, and the ability to bulk schedule topics.

## Insights

Gain better visibility into the field with real-time insights to ensure projects are on-time and running smoothly.